

2008 8

592

339

9

EMT

R

CCS

1

2

3

4

5

1

2

3

4

5

6

1





5

1

1

3

5

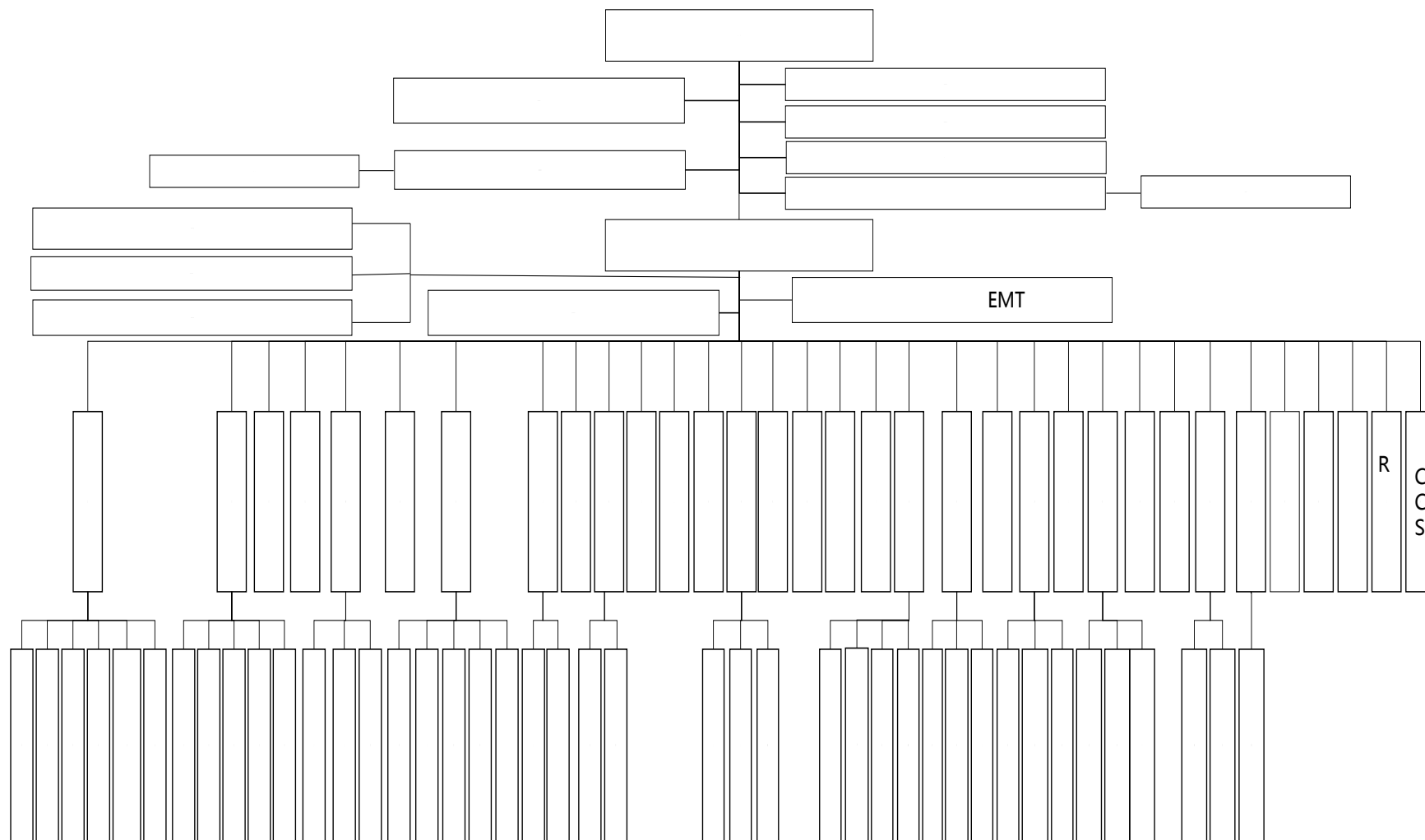
2

9

EMT

R

CCS



6

7

1

2

3

4

5

6

2

3

4

2004 12

ERP

ERP

CRM

OA

HR

MES

ERP

1

OEM

2

3

4

5

KA

30%

1

200

200

2

3

1

2

3

4

2015 07

5



2017 12 31

—

**2018 4 9**